

Kansas City Area Transportation Authority

One RideKC: Regional Transit And Funding Plan

Stakeholder Advisory Committee, May 20, 2021

#OneRideKC



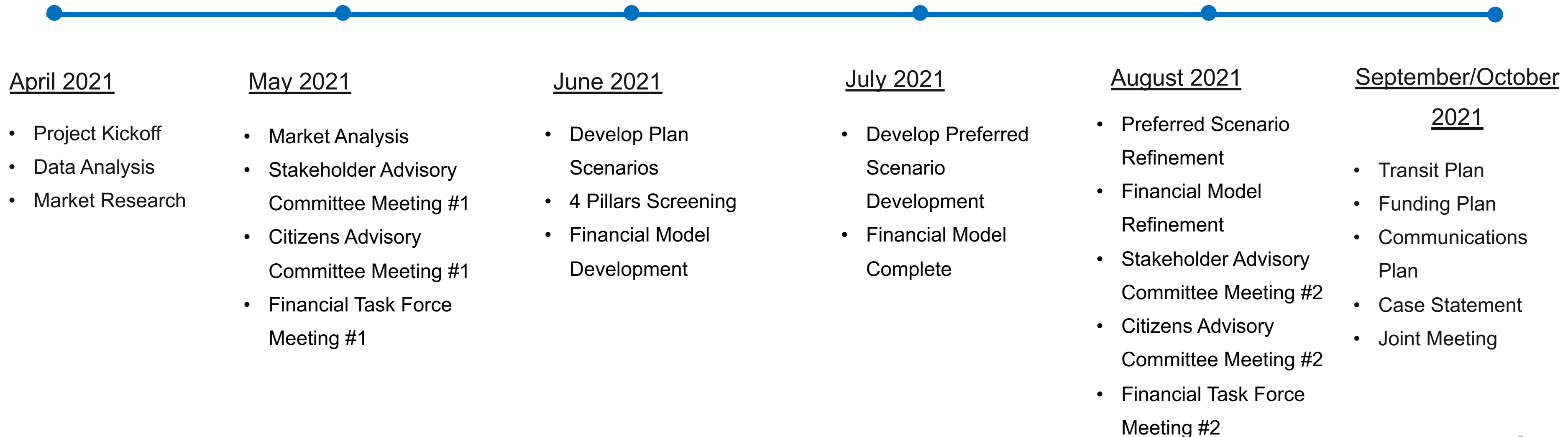
Agenda

- Welcome and Purpose
- Process Overview
- Stakeholder Engagement Process
- Four Pillars of Access
- Process Success
- Next Steps



Process Overview

Concurrent tasks of communications and stakeholder engagement, transit planning, and financial planning.



Where We Are

- ❑ Need to make the case for regional investment
- ❑ Need to build on existing foundation
- ❑ Need a road map to success

Where We'll Finish

- ✓ Communication Plan
- ✓ Financial Plan
- ✓ Transit Plan
- ✓ Stakeholder Engagement
- ✓ Case Statement
- ✓ Success Road Map
 - Actionable
 - Milestones
 - Owners



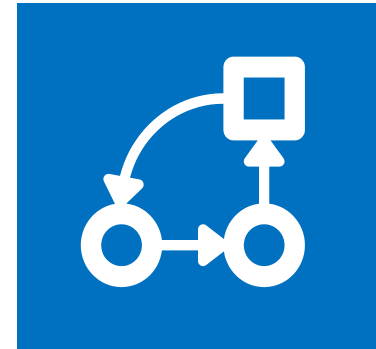
Advisory Committees



Stakeholder Advisory Committee

Role: Executive level advisory and thought-leadership insight to the overall process.

Provide thought leadership to community perception, message development, case statement, and strategy.



Citizens Advisory Committee

Role: Citizens focused advisory to the transit planning process and will ensure voices from the community are heard.

Advise in the development of plans that are responsive to community priorities and equitable transportation.



Financial Task Force

Role: Municipal finance focused on advisory and validation to financial strategies, assumptions and model.

Advise in the development of financial plans and assumptions, assure validity of revenues and costs associated with the long-term funding of the program.

Stakeholder Advisory Committee Invitations

INVITED - NOT ACCEPTED

Name	Organization
Bob Huston	Cass County
Charlie Shields	Truman Medical Centers/University Health
Clyde McQueen	Full Employment Council
Councilwoman Melissa Robinson	City Council, Kansas City, 3rd District
Darin Sanders	Clay County
Janee Hanzlick	Johnson County
Leonard Graham	Taliaferro & Browne
Marc Hill	Civic Council
Mike Kelly	Roeland Park
Scott Francis	Philanthropist

INVITATION ACCEPTED

Name	Organization
Ann Smith-Tate	Shawnee Chamber of Commerce
Bill Dietrich	Downtown Council of KC
Bill Ferguson	Overland Park Chamber of Commerce, Central Bank of the Midwest
Brad Cornell	Olathe Chamber of Commerce
Brian McKiernan	Unified Government of Wyandotte County / Kansas City, Kansas
Caleb Clifford (Alternate for Frank White Jr.)	Jackson County
Carlos Gomez	Hispanic Chamber
Carolyn Watley	CBIZ Benefits & Insurance Services, Inc., KCADC, KC Chamber of Commerce
Cassandra Wainwright	Concerned Clergy Coalition of Kansas City
Crissy Dastrup (Alternate for Councilman Eric Bunch)	KCMO, 4th District
Daniel Silva	Kansas City, Kansas Chamber of Commerce
David Cauble (alternate for Paul Kempinski)	Children's Mercy Hospital
Ed Ford	Northland Regional Chamber of Commerce
Eileen Weir	City of Independence
Griffin Smith (alternate for Shelie Daniel)	MoDOT - Kansas City District

INVITATION ACCEPTED

Name	Organization
Gwen Grant	Urban League of Greater Kansas City
Jon Stephens	Port KC
Josh Powers	Johnson County
Justice Horn	Department of Energy and Metropolitan Energy Center
Justus Welker	Unified Government
Ken Bacchus	Black Chamber of Commerce of Greater Kansas City
Kim Randolph	Heartland Black Chamber of Commerce
Lindsey Douglas	KDOT
Pat "Duke" Dujakovich	Greater AFL-CIO
Rep. Ingrid Burnett	Missouri House of Representatives
Ron Achelpohl	MARC
Tamika McClaine	KCATA
Teresa Martinez	Visit KC
Tim McKee	Olathe Chamber of Commerce
Tom Gerend	KC Streetcar Authority
Tracey Osborne Oltjen	Overland Park Chamber of Commerce
Vickie Wolgast	South KC Chamber & Martin City District Manager
William "Bill" George	Kansas City Transportation Group

Financial Task Force Invitations

INVITED - NOT ACCEPTED	
Name	Organization
Brennan Crawford	Community Housing of Wyandotte County/Community Development Financial Institution Coalition
Bridgette Williams	Heavy Constructors Association
Daniel Serda	LISC/Community Development Financial Institution Coalition
Ed Eilert	Johnson County Board of County Commissioners
Fred Yonker	Belton Chamber of Commerce, Cass County Coalition of Chambers
Greg Kindle	Wyandotte Economic Development Council
Jeff Pittman	Kansas Legislature - state senator
Jerry Nolte	Clay County
Joe James	Country Club Bank, Northland Regional Chamber of Commerce
Kathleen VonAchen	Unified Government
Michael Collins	JE Dunn Capital Partners
Troy Schulte	Jackson County

ACCEPTED INVITATION	
Name	Organization
Alise Martiny	Greater Kansas City Building Trades Council
David Warm	MARC
Deb Settle	Northeast Johnson County Chamber of Commerce
Douglas Stone	Lewis Rice, LLC
Herbert Hardwick	Hardwick Law Firm
Jason Carter-Solomon	Enterprise Bank & Trust
Joe Hudson	Carpenters Regional Union
Joe Reardon	Greater Kansas City Chamber of Commerce
Marcia Harrington (alternate for Greg Kindle)	Wyandotte Economic Development Council
Scott Neufeld	Johnson County Government
Tammy Queen	City of Kansas City, Mo

Citizens Advisory Committee Invitations

INVITED - NOT ACCEPTED	
Name	Organization
Clyde McQueen	Full Employment Council
Dan Goodman	Johnson County, Kansas, Area Agency on Aging
Don Maxwell	Prospect Business Association
Julie Brewer	United Community Services of Johnson County
Michele Stitt	The Church of Jesus Christ of Latter-day Saints
Pam Vassar	Johnson County Community College
Suzanne Wheeler	Mid-America Gay & Lesbian Chamber
Thomas M. Scott	KCK Housing Authority

ACCEPTED INVITATION	
Name	Organization
Aaron Deacon	Ride KC Advisory Committee, KC Digital Drive
Ajibola Adepoju Barbee (alternate for Hilary Singer)	Jewish Vocational Services
Amy Castillo	Ability KC
Brandy Williams (alternate for Suzanne)	Mid-America LGBT Chamber
Elaine Stroud (alternate for Thomas Scott)	KCK Housing Authority
Eric Rogers	BikeWalkKC
Gina Gowin	Alphapoint
John Sharp	South Kansas City Alliance
Keely J. Schneider	Workforce Partnership (Johnson, Leavenworth, Wyandotte)
Logan Heley	City of Overland Park
Matt Staub	KC Regional Transit Alliance
Merrique Jenson	SocialScope Productions / Transformations Youth Organization
Michele Stitt	The Church of Jesus Christ of Latter-day Saints
Niki Lee Donawa	Truman Medical Centers
Paige Perlik	National WWI Museum and Memorial
Sean Ackerson	Southtown Council, Brookside Business Association, Troost Avenue District
Steve Franklin	Johnson County Community College

Four Pillars of Access



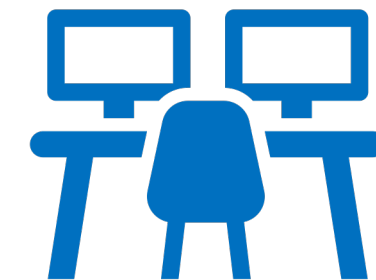
Housing



Healthcare



Education



Employment

What advice would you give the KCATA and project team as they think about priorities and decision making?

What advice would you give the KCATA and project team to assure the process is a success?

Next Steps

- Next Stakeholder Advisory Committee – late Summer 2021
- Anticipate electronic information updates
- Provide feedback on messaging and community news
- Promote links to project information and process facts
- Respond to surveys and links for ideas and insights

Questions and Follow Along

David Johnson: djohnson@kcata.org

Ehren Bingaman: ehren@transproconsulting.com

Jason Parson & Erin Barham, APR: erin@parsonkc.com

#OneRideKC

